

**Milton**



# Product Line Brochure

**Spring 2022**



CAT  
Power Generation

XQ425

Milton CAT  
POWER  
The Best Decision You'll Make

336F

CAT

Trimble® Earthworks

20-034 BL-2 11-4-20 0.00 + 0.00

BLDG.#12  
FFE - 416.15

1760 DC BKT  
0.15

0.15

1709.3h  
0.8



# TABLE OF CONTENTS

Milton CAT - Committed to You .....	4
Parts.....	5
Service & Repairs.....	6
SITECH Northeast.....	7
Milton Rents.....	8

## Machines

Skid Steer Loaders .....	9
Compact Track Loaders.....	9
Backhoe Loaders.....	9
Compact Wheel Loaders.....	9
Small Wheel Loaders.....	9
Medium Wheel Loaders .....	10
Large Wheel Loaders.....	10
Telehandlers .....	10
Articulated Trucks .....	10
Micro Hydraulic Excavators .....	10
Mini Hydraulic Excavators.....	10
Small Hydraulic Excavators.....	11
Medium Hydraulic Excavators.....	11
Large Hydraulic Excavators.....	11
Wheel Excavators.....	11
Small Dozers.....	11
Medium Dozers.....	11
Motor Graders.....	11

## Paving Products

CAT Asphalt Pavers.....	12
Weiler Asphalt Pavers .....	12
Screeds .....	12
Utility Rollers.....	12
Tandem Vibratory Rollers .....	12
Soil Compactors .....	13
Pneumatic Rollers.....	13
Cold Planers.....	13
Reclaimers / Stabilizers .....	13
Remixing Vehicles .....	13
Road Wideners.....	14

## Forestry Products

Weiler Wheel Feller Bunchers .....	15
Weiler Track Harvesters.....	15
Weiler Wheel Skidders.....	15
CAT Forest Machines.....	15
Weiler Track Feller Bunchers .....	15
Weiler Knuckleboom Loaders .....	15
Logset Forwarders.....	15
Logset Harvesters.....	16
Material Handlers.....	16
Weiler Mulcher .....	16

## Specialty Equipment

Underground Elphinstone.....	16
------------------------------	----

## Temperature Control

Rental Air Conditioning.....	17
Air Cooled Chillers.....	17

## Compressors

Rental Compressors .....	17
--------------------------	----

## Work Tools

.....	18
-------	----

## Power Systems

Electric Power Generator Set Packages.....	22
Energy Storage - Inverter Options.....	23
Mobile Generator Sets.....	23
Electrical Systems .....	24
Industrial Power Systems .....	24

## Oil, Gas & Marine Products

Oil & Gas Products .....	25
Marine Engines .....	27
Fire Pumps .....	27

*For more complete information on CAT products, dealer services and industry solutions, please consult the experts at Milton CAT or visit us on the web at [www.miltoncat.com](http://www.miltoncat.com).*



# COMMITTED TO YOU

As your complete source for Caterpillar machines, engines, generators, parts, service and technology in the Northeast, Milton CAT's commitment to our customers goes beyond the initial purchase.

With a variety of flexible acquisition options and service plans to meet your specific needs, Milton CAT will deliver the superior equipment and

product support that you require for efficiency, safety and tackling tough jobs. We have made significant investments to ensure you are supported when you are faced with additional requirements and unexpected obstacles.

## EXPERIENCE LEADS TO SUCCESS

Although we have grown significantly from our humble dirt floor garage beginnings, Milton CAT maintains the same philosophy we have had since our start in 1960. Our commitment to customers, exceptional expertise, empowerment of employees, and longstanding partnership with Caterpillar, has made our dealership the choice of business owners in this demanding region of our country.

We have over 1,000 employees, some with over 40 years of experience, who are ready to share their knowledge and help you get the job done. Our dedicated sales representatives stay up to date on the changing requirements and evolving possibilities to maximize your uptime and productivity. As we support you through every stage of the project, you will have the peace of mind knowing our team has your best interests in mind.

## TAKE ADVANTAGE OF ALL MILTON CAT HAS TO OFFER:

- New, used and rent-to-purchase Caterpillar machines
- CAT power generation equipment
- Best-in-class complementary brands
- Parts
- Service and repair







# PARTS

Our parts operation exemplifies our commitment to your uptime. All components are in place to help us help you: a state-of-the-art and carefully planned automated distribution hub, comprehensive

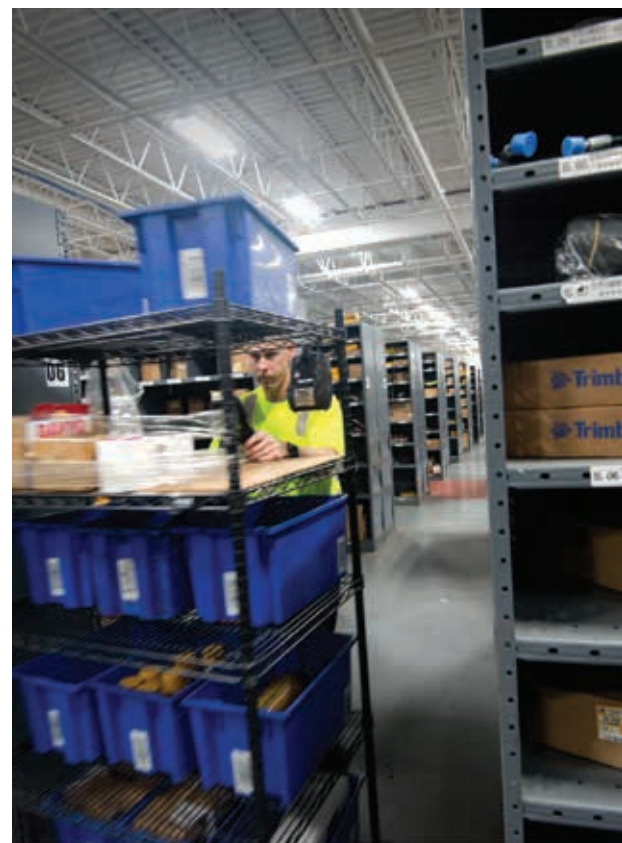
parts inventories at all of our locations, a nightly shuttle system between locations, an extensive parts pick-up network, an experienced and dedicated team and the latest order tracking technology.

## AVAILABILITY AND ORDERING OPTIONS

95% of the time your order can be filled from inventory at any of our locations. In the very few cases when your part is not stocked on-site at your nearest location, your part will come by shuttle from our parts hub in Milford, MA or the CAT parts depot in York, Pennsylvania, and will be available as soon as the next business day. We carry parts for all of our CAT lines as well as our complementary product lines including Genie, Weiler and Sullair. Even if your fleet includes extremely old machines, or equipment from other manufacturers, you can still take advantage of the speed and efficiency of the Milton CAT parts operation.

Across our entire territory, all Milton CAT locations are ready to handle requests from any type of business, but certain locations carry a more complete inventory for specific industries. For example, Brewer, ME, keeps a complete inventory of parts for forestry equipment; Cranston, RI, and Scarborough, ME, have a large line of marine engine parts; Batavia and Syracuse, in New York, cater to the needs of the local farmers, while Binghamton makes sure long-haul truckers passing through never have to wait long for engine parts.

You can order your parts in-person, by phone, fax, email, or online. You can pick up your order in-person, have it shipped by private carrier, or have it delivered to one of our convenient and secure pickup-boxes.



# SERVICE & REPAIR

Your uptime is critical – your reputation, your competitiveness, and your profits depend on it. And you can depend on Milton CAT to protect it. We pride ourselves in supporting you with an unparalleled level of service to extend your equipment's life and minimize operating costs.

No matter if your repair is done in-shop or in-the-field, our expertly trained technicians have the tools, parts, and knowledge they need to get the job done. Our Service Solutions Center will monitor your machine's health in real time and provide you with vital data to improve your uptime and maximize profits.

## MACHINE MAINTENANCE SIMPLIFIED:

- Certified Rebuilds – Component or Complete Machine
- Customer Value Agreements
- Product Support Consultants
- Hydraulic Hose Repair and Assembly
- Cylinder Repair
- Machine Evaluations
- After Hours Emergency Service

## RELIABLE POWER GENERATION MADE EASY THROUGH:

- Fuel, Oil, and Coolant Analysis
- Load Testing
- Emissions Compliance
- Contingency Planning

## THE SERVICE ANSWER HELPLINE **518-877-6802**

Our Service Answer Helpline is ready to answer your questions at no charge to you. When you call the helpline, you will be asked to leave a message with a summary of the problem and the model and serial number

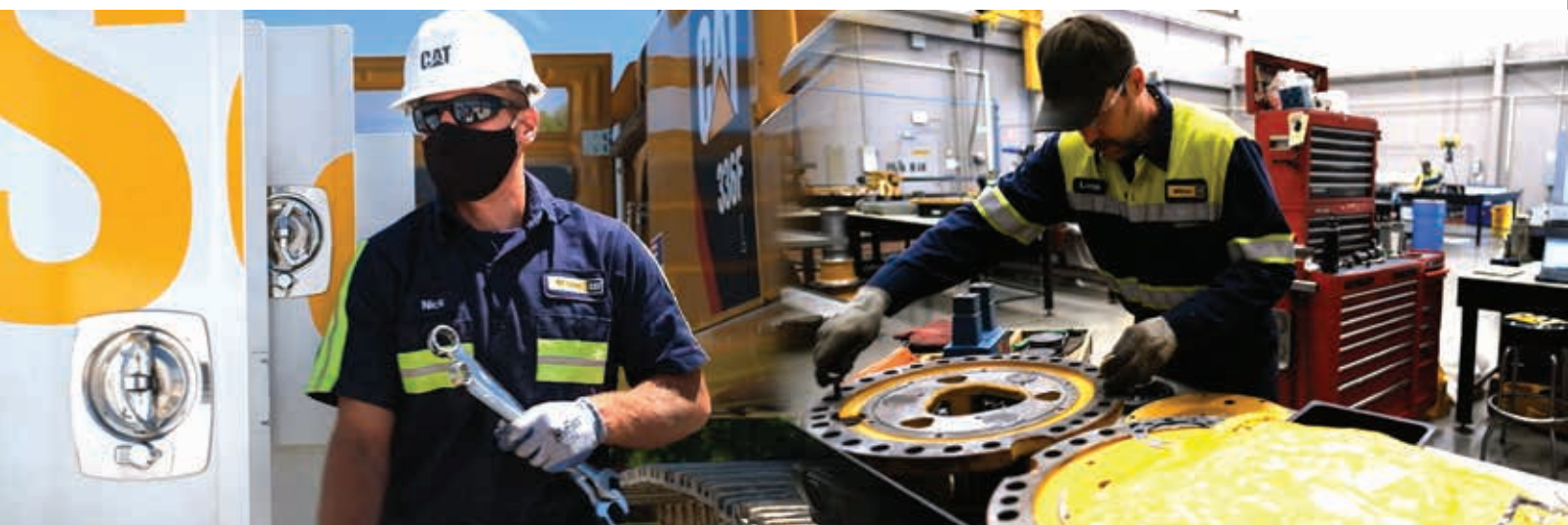
of your machine or engine. Listening to your message allows our experts time to research the correct solution for your problem. Our experts will then call you back, usually within 60 minutes.

## SIMPLIFY SERVICE WITH A CUSTOMER VALUE AGREEMENT



Milton CAT Customer Value Agreements (CVA) offer you assurance that your equipment will be in good health and ready when you need it. CVAs save you the hassle of scheduling, performing and tracking machine

maintenance. Our expert CVA team will increase your uptime and make machine ownership easy. We have a variety of CVA programs that can meet your requirements today and expand to accommodate you tomorrow as well.







SITECH Northeast is an authorized, independent provider of Trimble positioning, machine control technology, training, support, and service. Our team has the right combination of technical knowledge and construction expertise to improve your project's productivity,

quality, safety, and sustainability through all stages of the construction lifecycle. Whether your focus is site work, roadbuilding, utility work or residential work, your Trimble construction technology solution was developed specifically to meet your application's needs.

## THERE FOR YOU

There's a SITECH Northeast team member close by to help you leverage SITECH technology for significant improvements in your project workflow, production, and accuracy. We have Trimble equipment to install on all brands of earthmoving machines, so no matter your

equipment's make, we have a user-friendly, cost-effective solution for you. We understand that industries are constantly evolving, and we will be there with options as your needs change.

## TECHNICAL INNOVATION AND SUPERIOR SERVICE COMBINE THROUGH:

- 2D and 3D machine control systems
- Site positioning systems
- Productivity monitoring solutions
- Marine construction systems
- 3D data software workflows

## EXPERIENCED SITECH NORTHEAST CONSTRUCTION PROFESSIONALS PROVIDE:

- Local customer service and sales
- Installation and repair services
- Personalized training
- Technical support

**To learn how SITECH Northeast can give your business an edge, visit [www.sitechnortheast.com](http://www.sitechnortheast.com) or call 855.748.3244.**





Milton Rents, a full-service equipment rental services company, offers customers quality products with competitive pricing and outstanding service. From earthmoving and aerial equipment to generators, Milton Rents has everything you need.

- Aerial equipment
- Air compressors
- Climate control
- Compaction
- Earthmoving
- Generators
- Light towers

## OUTSTANDING SERVICE

As an independent locally operated company, Milton Rents is able to respond quickly and provide a high level of personal service. Our knowledgeable salespeople have decades of experience in the field and understand the unique challenges you face and the capabilities of each piece of equipment that we rent or sell. Your designated Milton Rents salesperson provides attentive one-on-one care designed to keep you operating expertly and efficiently.

## GROWING WITH YOU

We hope to continue opening new facilities so the entire Northeast can take advantage of Milton Rents' services. As Milton Rents expands, you can rest assured that our exceptional, reliable, and personalized service will remain.

**For more information on our locations and equipment offerings, please visit [www.miltonrents.com](http://www.miltonrents.com) or call 877.344.5438.**





# MACHINES

## Skid Steer Loaders



Model	Gross Power	Rated Operating Capacity	Operating Weight
	hp	lb	lb
226D3	67.1	1,550	5,849
232D3	67.1	1,900	6,514
236D3	74.3	1,800	6,567
242D3	74.3	2,200	7,138
246D3	74.3	2,200	7,478
262D3	74.3	2,700	8,296
272D3	98	3,450	9,133
272D3 XE	110	3,700	9,573

## Compact Track Loaders



Model	Net Power	Operating Weight	Operating Capacity	Ground Pressure
	hp	lb	lb	psi
239D3	67.1	7,434	1,530	4.4
249D3	67.1	7,831	1,740	4.7
259D3	74.3	8,987	2,010	4.9
279D3	74.3	10,095	2,220	4.4
289D3	74.3	10,688	2,890	4.7
299D3	98	11,464	3,480	4.7
299D3 XE	110	11,756	3,560	4.8

## Backhoe Loaders



Model	Net Power	Max. Operating Weight	Dig Depth Std. Stick
	hp	lb	
415	70	24,251	14
416	87	24,251	14.3
420	93	24,251	14.3
420XE	92	24,251	14
430	108	24,251	15.4
440	109	29,321	15.5
450	131	29,321	17

## Wheel Loaders



### Compact

Model	Net Power	Operating Weight	Bucket Capacity
	hp	lb	yd <sup>3</sup>
903D	42	9,414	0.8 - 1.3
906M	74	12,346	1 - 2
907M	73	12,677	1 - 1.3
908M	74	14,032	1 - 2
910	110	18,102	1.7 - 2.5
914	110	19,103	1.9 - 2.5
920	121	21,742	1.7 - 2.5

### Small

Model	Net Power	Operating Weight	Bucket Capacity
	hp	lb	yd <sup>3</sup>
926M	168	28,193	2.5 - 6.5
930M	168	31,382	2.7 - 6.5
938M	188	35,778	3.2 - 6.5



# MACHINES

## Wheel Loaders



### Medium

Model	Net Power	Operating Weight	Bucket Capacity
	hp	lb	yd <sup>3</sup>
950M	250	42,357	3.3 - 12
950GC	225	41,554	3.75 - 5.75
962M	250	44,591	3.3 - 12
966	321	51,124	3.75 - 15.5
966XE	321	51,124	3.75 - 15.5
972	339	54,858	3.75 - 18.25
972XE	311	54,871	4.19 - 13
980	393	66,877	5.25 - 19
980XE	393	66,877	5.25 - 19
982	404	78,264	6.25 - 22.5
982XE	404	78,264	6.25 - 22.5



### Large

Model	Net Power	Operating Weight	Bucket Capacity
	hp	lb	yd <sup>3</sup>
986K	373	98,806	6.5 - 13.5
988K	541	112,574	6.2 - 17

## Telehandlers



Model	Gross Power	Operating Weight	Rated Capacity	Max. Lift Height
	hp	lb	lb	ft
TH255C	74	11,000	5,500	18.37
TL642	100	22,002	6,500	42
TL943	111	25,750	9,000	43
TL1055	142.1	31,879	10,000	54.9
TL1255	142.1	34,361	12,000	54.6

## Articulated Trucks



Model	Net Power	Rated Payload	Capacity (Heaped)
	hp	ton	yd <sup>3</sup>
725	342	26.5	19.6
730	370	31	23
735	424	35.3	26.2
740 GC	439	40	29.7
745	496	45.2	32.7

## Hydraulic Excavators



### Micro

Model	Net Power	Op. Weight	Max Digging Depth
	hp	lb	in
300.9D	13	2,061	68
301.7 CR	21	4,222	100
301.8	21	4,473	101.2
302	21	4,987	101.2
302 CR	21	4,987	101.2
302.7 CR	21	6,239	108

### Mini

Model	Net Power	Op. Weight	Max Digging Depth
	hp	lb	in
303 CR	23.6	7,817	116.1
303.5 CR	23.6	9,239	122.4
304	45	9,867	138.2
305 CR	45	12,688	144.5
306 CR	55.9	15,766	146
307.5	54.8	17,905	183
308 CR	69.5	20,077	183
309 CR	69.5	21,091	183
310	69.5	22,451	205



# MACHINES

## Hydraulic Excavators (Cont.)

### Small

Model	Net Power	Op. Weight	Max Digging Depth
	hp	lb	ft
313	108	30,400	19.8
313 GC	73	30,400	19.8
315	108	34,000	19.6
317	130	40,200	21
317 GC	119	38,100	21

### Medium

Model	Net Power	Op. Weight	Max Digging Depth
	hp	lb	ft
320	172	50,765	22.1
320 GC	146	48,281	22
323	172	56,200	22.1
325	172	49,604	22
326	201	57,100	22.38
330	273	68,100	23.8
330 GC	202	67,700	23.8
335	273	77,000	22.1

### Large

Model	Net Power	Op. Weight	Max Digging Depth
	hp	lb	ft
336	311	81,900	26.9
349	424	105,200	25.1
352	424	110,500	23.2
374	484	158,200	28.1
395	542	207,300	31.9

## Wheel Excavators



Model	Net Power	Travel Speed	Operating Weight
	hp	mph	lb
M314	134	23	33,069 - 39,683
M316	148	21.7	36,400
M318	174	21.7	38,580 - 43,980
M322F	169	19	47,377 - 49,229

## Dozers



### Small

Model	Net Power	Operating Weight	Blade Capacity
	hp	lb	yd <sup>3</sup>
D1/D1 LGP	80	17,855/18,839	1.96/2.17
D2/D2 LGP	92	18,382/19,066	1.96/2.42
D3/D3 LGP	104	20,640/21,369	2.73/3.06

### Medium

D4/D4 LGP	130	29,259/30,882	4.26/4.98
D5/D5 LGP	170	37,875/42,263	4.6/5.5
D6/D6 LGP	215	50,733/51,912	5.9/6.5
D6XE/D6 XE LGP	215	49,388/51,333	7.5/5.9
D8T/D8T LGP	354	87,600/84,906	13/12.9

## Motor Graders



Model	Net Power	Operating Weight	Blade Width
	hp	lb	ft
120 AWD	139	35,067	12
120 GC	139	35,494	12
140	179	42,647	12
140 AWD	196	38,912 - 42,119	12
140 GC	196	38,912	12
150 AWD	200	43,950	12
NorAm 65E	120	16,900	10-12

# PAVING PRODUCTS

## CAT Asphalt Pavers



Model	Gross Power hp	Operating Weight lb	Std. Paving Range ft-in
AP300F	74.8	14,550	27.5" - 13' 1"
AP355F	74.8	19,246	27.5" - 15' 1"
AP500F	142	29,020	8' 4" - 21' 4"
AP555F	142	30,430	8' 4" - 24' 5"
AP600F	173	30,522	8' 4" - 26' 4"
AP655F Mobil Track	173	34,356	8' 4" - 33'
AP655F Steel Track	173	35,368	8' 4" - 33'
AP655F L	202	38,449	8' 4" - 33'
AP1000F	225	34,820	9' 10" - 25'
AP1055F	225	37,553	9' 10" - 33'

## Weiler Asphalt Pavers



Model	Engine	Width in	Weight lb
P385B	CAT C3.4B Tier 4F	101	20,500
P265	CAT C3.4B Tier 4F	98	16,200
P195 Path Paver	CAT C2.2 Tier 4F	55	13,000
P65 Gravity Feed Paver	CAT C2.2 Tier 4F	98	12,600

## Screeds



Model	Paving Range ft	Weight lb
SE34 V	5' 9" - 11' 2"	3,086
SE34 VT	5' 9" - 11' 2"	3,196
SE50 V	8' 4" - 16' 4"	7,239
SE50 VT	8' 4" - 16' 4"	7,695
SE60 V	9' 10" - 16' 4"	7,495
SE60 V XW	9' 10" - 16' 4"	8,973
SE60 VT XW	9' 10" - 16' 4"	9,991

## Utility Rollers



Model	Gross Power hp	Operating Weight lb	Compaction Width in
CB1.7	24.7	3,538	35
CB1.8	24.7	3,825	39
CB2.5	48.2	5,546	39
CB2.5 GC	24.6	5,546	39
CB24B XT	36.2	6,885	47
CB2.7	48.2	5,936	47
CB2.7 GC	24.6	5,936	47
CB2.9	48.2	6,415	51
CB32B	36.2	6,190	51
CB4.0	48.2	7,971	51
CB4.4	48.2	8,362	48.2
CC2.6	30.3	4,982	47
CC24B	36.2	5,380	47
CC2.7	48.2	5,718	47
CC2.7 GC	24.6	5,718	47
CC34B	48.8	7,446	51
CC4.0	48.8	7,889	51

## Tandem Vibratory Rollers



Model	Gross Power hp	Operating Weight lb	Compaction Width in
CB7	100	19,015	66
CB8	100.6	19,224	73
CB10	120	21,638	73
CB13	142	27,557	85
CB15	142	28,958	90
CB16	142	31,941	90
CD8	100	16,314	111
CD10	100	19,842	111
CCS9	129	19,842	84



# PAVING PRODUCTS (Cont.)

## Soil Compactors



Model	Gross Power hp	Operating Weight lb	Compaction Width in
CS34	74.4	9,799	50
CP34	74.4	11,000	50
CP44B	100.6	15,935	66
CS44B	100.6	15,307	66
CS10 GC	120.7	23,036	84
CS11 GC	120.7	24,652	84
CP11 GC	120.7	25,009	84
CS12 GC	120.7	27,798	84
CP12 GC	120.7	27,769	84
CS54B	131.3	23,265	84
CP54B	131.3	24,539	84
CS64B	131.3	26,569	84
CS56B	156.9	25,346	84
CP56B	156.9	25,707	84
CS66B	156.9	27,245	84
CS68B	156.9	31,572	84
CP68B	156.9	32,370	84
CS74B	173.5	32,264	84
CP74B	173.5	30,048	84
CS76B	173.5	38,450	84
CP76B	173	37,670	84
CS78B	173.5	41,214	84
CP79B	173	44,577	84

## Pneumatic Rollers



Model	Gross Power hp	Operating Weight lb	Compaction Width in
CW12 7-Wheel	100.5	20,282	82
CW16 9-Wheel	100.5	33,069	69
CW16 11-Wheel	100.5	32,849	84
CW34	131	59,525	82

## Cold Planers



Model	Gross Power hp	Operating Weight lb	Milling Width in
PM310 Track	336.6	48,016	39.4
PM310 Wheel	336.6	46,473	39.4
PM312 Track	336.6	48,429	48.2
PM312 Wheel	336.6	46,886	48.2
PM313 Track	336.6	48,658	51.2
PM313 Wheel	336.6	47,115	51.2
PM620	630	73,480	79
PM622	630	74,737	88
PM820	800.6	79,653	79
PM822	800.6	80,910	88
PM825	800.6	82,673	98.6

## Reclaimers/ Stabilizers



Model	Gross Power hp	Max Weight lb	Cutting Width in
RM400	416	58,863	96
RM500B	546	62,611	96

## Remixing Vehicles



Model	Engine	Power hp	Weight lb
E1250B	CAT C7.1 Stage 5	250	53,400
E1650A	CAT C7.1 Tier 4F	250	67,200
E2850C	CAT C7.1 Tier 4F	300	75,000

# PAVING PRODUCTS (Cont.)

## Road Wideners



Model	Engine	Strike-off ft	Weight lb
W330B	CAT C2.2T Tier 4F	1 - 6	14,800
W430A	CAT C3.4B Tier 4F	1 - 8	19,500
W530B	CAT C3.4B/C4.4F Tier 4	1 - 10	26,327
W730B	CAT C4.4B Tier 4F	1 - 14	37,200





# FORESTRY PRODUCTS

## Weiler Wheel Feller Bunchers



Model	Engine	Gross Power hp	Weight lb
B570	CAT C7.1 Tier 4	203	39,120
B670	CAT C7.1 Tier 4	241	42,143

## Weiler Track Harvesters



Model	Engine	Gross Power hp	Weight lb
H157	CAT C4.4	184	47,000
H457	CAT C9.3 T4	298	67,140

## Weiler Wheel Skidders



Model	Engine	Gross Power hp	Weight lb
S250	CAT C7.1 Tier 4 Final	203	20,500
S350	CAT C7.1 Tier 4 Final	225	16,200
S450	CAT C7.1 Tier 4 Final	250	13,000
S550	CAT C7.1 Tier 4 Final	275	12,600

## CAT Forest Machines



Model	Net Flywheel Power hp	Operating Weight lb	Max. Reach ft-in
538	172	65,268	32.4
548	204	77,942	41.3
558	239	93,176	41.6
568	319	106,128	50.6

## Weiler Track Feller Bunchers



Model	Engine	Gross Power hp	Weight lb
B457	CAT C9.3 Tier 4 Final	298	67,020
B458	CAT C9.3	298	79,221
B757	CAT C9	303	67,960
B758	CAT C9	303	81,738

## Weiler Knuckleboom Loaders



Model	Engine	Gross Power hp	Weight lb
K560	CAT C4.4	173	33,800
K760	CAT C4.4	100	36,500

### Stationary

Model	Engine	Gross Power hp	Weight lb
K161	Electric		Please contact Milton CAT for available configurations.
K261	Electric		
K561	Electric		

### A-Frame

Model	Engine	Gross Power hp	Weight lb
2124	Electric	NA	6,050

## Logset Forwarders



Model	Net Flywheel Power hp	Operating Weight lb	Max. Reach ft
8F	250	38,600	23 - 32
10F	300	48,500	23.5 - 32.8

# FORESTRY PRODUCTS & SPECIALTY EQUIPMENT

## Logset Harvesters



Model	Net Flywheel Power hp	Operating Weight lb	Max. Reach ft
8H	250	38,600	23 - 32
10H	300	48,500	23.5 - 32.8

## Underground Elphinstone



Model	Net Flywheel Power hp	Operating Weight lb	Max. Reach ft-in
AD30	CAT C15	409	63,647
AD45	CAT C18	589	96,225
AD45	CAT C18	587	96,225
R1300	CAT 3306 DITA	165	61,178
R1700	CAT C11 Acert	323 - 353	115,745
R2900	CAT C15 Acert	430 - 447	148,611
R3000	CAT C15 Acert	398	177,273

## Material Handlers



### Track

Model	Net Flywheel Power hp	Operating Weight lb	Max. Reach ft
MH3250	314	107,700	52.5
MH3260	317	133,200	59.1

### Wheel

Model	Net Flywheel Power hp	Operating Weight lb	Max. Reach ft
MH3040	300	84,940	50.8
MH3022	148	54,000	33.8
MH3024	174	59,100	39.4
MH3026	174	64,375	42.7
MH3022F	176	48,094 - 50,552	36.08
MH3024F	176	50,596 - 53,242	27.75
MH3026F	176	55,601 - 57,651	39.08

## Weiler Mulcher



Model	Engine	Gross Power hp	Weight lb
M860	CAT 9.3B	375	38,450



# TEMPERATURE CONTROL

## Rental Air Conditioning



Model	Ton	Flow/GPM	
<b>TC0012</b>	12	4,050	Please contact Milton CAT for available configurations.
<b>TC0030</b>	30	10,000	Please contact Milton CAT for available configurations.
<b>TC0080</b>	80	18,000	Please contact Milton CAT for available configurations.

## Rental Air Cooled Chillers



Model	Ton	Flow/GPM	
<b>TCC0030</b>	30	30 - 100	Please contact Milton CAT for available configurations.
<b>TCC0056</b>	56	90 - 200	Please contact Milton CAT for available configurations.
<b>TCC00100</b>	100	100 - 400	Please contact Milton CAT for available configurations.
<b>TCC00200</b>	200	180 - 800	Please contact Milton CAT for available configurations.
<b>TCC00417</b>	417	400 - 1400	Please contact Milton CAT for available configurations.
<b>TCC00500</b>	500	400 - 1400	Please contact Milton CAT for available configurations.

# COMPRESSORS

## Rental Compressors



Model	CFM	PSI	
<b>400HHAF</b>	400	80 - 200	Please contact Milton CAT for available configurations.
<b>XAVS400</b>	400	80 - 200	Please contact Milton CAT for available configurations.
<b>900HAF</b>	900	80 - 150	Please contact Milton CAT for available configurations.
<b>800-900HAF</b>	700 - 900	80 - 200	Please contact Milton CAT for available configurations.
<b>900E-HAF Electric</b>	900	80 - 150	Please contact Milton CAT for available configurations.
<b>900-1150XHAF</b>	900 - 1150	350 - 500	Please contact Milton CAT for available configurations.
<b>XAS950</b>	950	80 - 200	Please contact Milton CAT for available configurations.
<b>XAVS1000</b>	1000	365	Please contact Milton CAT for available configurations.
<b>XAVS1550</b>	1300 - 1600	200 - 500	Please contact Milton CAT for available configurations.
<b>1600HAF</b>	1600	80 - 150	Please contact Milton CAT for available configurations.
<b>XAS1800</b>	1800	80 - 200	Please contact Milton CAT for available configurations.

# WORK TOOLS

## THE RELIABLE CHOICE

Using high quality CAT Work Tools in combination with your CAT machines gives you perfect performance matches. No matter which attachments you choose from our extensive range, you benefit from: uninterrupted productivity, a single point of contact for all your equipment needs, and the backing of unrivaled parts and service. Because they are CAT Work Tools, they also provide a high resale value.

## CAT SMART Attachments with ASSIST Features Improve Productivity

Caterpillar upgraded the D3 Series with new SMART attachment blades and a backhoe configuration.

Three new CAT SMART attachments, the Dozer Blade, Grader Blade, and Backhoe, are designed to add significant versatility to the range of D3 Series CAT Skid Steer Loaders and Compact Track Loaders. The control systems for the new attachments enable operators to easily adapt each machine's standard controls to precisely match the recognized SMART Attachments' control needs.

The ASSIST feature enhances operator proficiency to achieve smoother grades with fewer passes by coordinating machine and blade movements to craft flat surfaces, enabling the operator to concentrate on building or cutting material to achieve the desired grade.

As you will see, we offer everything you need to get the job done efficiently and with confidence. Whether you need to cut, rip or tear, sort or load, lift or dig, move or level, pulverize or crush—we have the solution.

**Contact Milton CAT for more details about CAT Work Tools.**



### Augers

Augers are designed for drilling holes with the right amount of speed and torque for maximum productivity in many soil types. CAT Augers are for use on CAT Skid Steer Loaders, Compact Track Loaders, Compact Wheel Loaders, Mini Excavators and Backhoe Loaders.



### Bale Handlers

The Bale Handler is designed to load, carry and handle round and square bales of hay, straw, cotton and other similar materials. This telehandler work tool is ideal for hay handling, feedlot operations, cattle and horse farms, stables and silage applications.



### Backhoes

Backhoe attachments are used for digging footings, drainage ditches, utility trenching, maintaining slopes and embankments in a variety of construction, industrial and landscape settings. They pair well with hammers, thumbs and augers—extending the versatility of CAT Skid Steer Loaders and Compact Track Loaders.



### Blades

Caterpillar offers a wide variety of blade styles including straight, coal, woodchip, landfill, reclamation and cushion dozer—enhancing the machine's productivity in many different industries and applications. Every CAT Blade is designed to perfectly match the machine's configuration, extending your effective scope of operation.



### Bale Grabs and Bale Spears

Bale Grabs safely grab and carry square or round baled material. Bale Spears are ideal for handling hay bales, both round and square as well as other baled material in agriculture applications.



### Brooms

Brooms are ideal for sweeping and cleaning dirt, rock, snow and other debris from streets, parking lots, driveways, sidewalks and factory floors. Several sizes and styles are available for CAT Loaders. Water sprinkler kits are available for dust control.





### Brushcutters

Brushcutters are ideal for clearing overgrowth from highway medians, utility and pipeline easements and for initial land clearing for housing, parks and recreational areas. The SSL/CTL-based heads can process brush, shrubs, and grasses. CAT Brushcutters are well suited for high-production brush cutting for land management projects.



### Buckets-Excavator

Caterpillar offers a wide variety and many sizes of excavator buckets to include: clean-up, digging, ditch cleaning, ditch cleaning tilt, extreme duty, general duty, grading, heavy duty and severe duty. Consult with the experts at Milton CAT to ensure selection of the most efficient bucket for your machine and application.



### Buckets-Loaders

CAT Loader Buckets are designed to load easily and efficiently in all applications. Grading bucket's long, flat floor can scoop material, level or backfill.



### Cold Planers

Cold Planers are primarily used to economically restore asphalt and concrete surfaces in small residential and commercial paving jobs. They are also ideal for milling imperfections prior to resurfacing and removing deteriorated pavement when the use of dedicated planers is limited. They are designed for use on CAT Skid Steer Loaders, Compact Track and Wheel Loaders and Backhoe Loaders.



### Compaction Wheels

Compaction Wheels are available for all CAT Mini Excavators as well as all CAT Backhoe Loaders. Multiple widths are offered for each machine platform to cover a wide range of application requirements. Wheels feature tapered roller bearings and a tapered foot design with static pad rollers which allows for smooth operation and helps achieve desired compaction levels. The open rim design allows the wheel to penetrate through the trench fill and compact the soil from the bottom up.



### Compactors-Drum

Vibratory Drum Compactors are used for compacting soil, sand or gravel prior to pouring concrete or laying asphalt surfaces. Vibratory action and dynamic force combine to provide excellent compaction in a compact size. This compactor style is designed for use on CAT Skid Steer Loaders, Compact Track and Wheel Loaders.



### Compactors-Plate

Vibratory Plate Compactors are used for compacting soil, sand or gravel prior to pouring concrete or laying asphalt surfaces. They are also ideal for asphalt patch work. This compactor style is designed for use on CAT Skid Steer Loaders, Compact Track and Wheel Loaders.



### Flail Mowers

Flail Mowers are ideal for efficient cutting and mulching of vegetation and overgrowth for both commercial and residential properties.



### Forks-Forestry

Several fork types are available for heavy-duty applications found in forestry sites and millyards. Logging, millyard, grapple and lumber forks are available for loading and unloading trucks, decking and feeding the mill, plus handling and sorting lumber, logs and palletized material.



### Forks-Pallet

Many pallet fork sizes are available to equip the smallest to largest machines to handle all types of material. From bulky, palletized material found on most every construction site to bagged fertilizer and seed on landscaping and nursery sites—pallet forks are some of the most versatile attachments.



### Forks-Pipe and Pole

This purpose-built fork is designed for use on Wheel Loaders in oil and gas field drilling, pipeline construction and utilities work. The two-piece top clamp holds pipe from two to 36 inches in diameter. Clamping surface has rubber contact pads to protect pipe from damage.



### Grapples-Contractors

This grapple style is strong and durable, equipping hydraulic excavators for structural demolition, material handling, sorting, loading and unloading rock, scrap, pipe, waste material and other debris. The lower jaw is slightly curved and enables easy loading, more penetration into scrap debris, and unrestricted release of material when unloading.



### Grapples-Demolition and Sorting

It's easy for an excavator operator to precisely position this grapple to move scrap and demolition debris with its 360° rotation. Powerful grab force and fast cycle times ensure high productivity when taking down a building or sorting and loading material.



### Grapples-Forestry

Forestry Grapples for forest machines feature 360° rotation and can be quickly positioned for maximum productivity. CAT Forestry Grapples are built using high-strength steel throughout the body and tines, reinforced in key areas to maintain structural integrity. A wide range of sizes is available.



### Grapples—Orange Peel

Continuous 360° rotation gives material handler operators full control to position the grapple swiftly and precisely in scrap and other material. A covering guard facilitates easy access to the cylinders, which are housed within the tines for maximum protection. Choose from 4- or 5-tines in range of capacities sized for use with small and medium material handling excavators.



### Grapples—Trash

These grapples are wide and feature a 4-over-5 tine jaw construction making them ideal for excavators handling and moving large volumes of municipal solid waste, wood chips, wood debris, and other low-density material quickly.



### Grapple Buckets, Forks and Rakes

Grapple buckets, forks and rakes are designed to handle bulky materials. They are built for Compact Track and Skid Steer Loaders, Compact Wheel Loaders and Telehandlers. Utility grapple buckets, forks and rakes are for handling light materials while industrial grapples are for heavy-duty usage.



### Hammers

CAT Hydraulic Hammers make short work of your demolition, construction, quarry and production breaking needs. A sealed, sound-suppressed housing protects the power cell and significantly reduces sound levels of silenced models. A variety of sizes and tool options make CAT Hammers the ideal choice for concrete demolition, breaking rock and frozen or hard ground, and trenching.



### Lift Groups

Balderson Parallel Lift Groups enable CAT Motor Graders to engage a variety of front-mounted attachments such as plows, V-plows and straight blades, adding to the machine's versatility and on-the-job performance.



### Material Handling Arms

These tools equip CAT Loaders and Telehandlers for moving, manipulating and placing pipe, precast concrete structures, small equipment and other similar items with maximum visibility and control. They are well suited for loading, carrying and setting trees and large shrubs in landscaping.



### Mulchers

For high performance cutting and mulching of vegetation and undergrowth from typical wooded terrain—this attachment reduces trees, saplings, and shrubs into mulched material. These Excavator and SSL/CTL-based heads can process trees up to 8" diameter providing effective solutions for land management projects. These rugged heads can also incorporate the mulch into the soil, returning nutrients to the soil and reducing erosion.



### Multi-Processors

A multi-processor equips your excavator for even higher levels of demolition versatility. Consisting of a housing and jaw set (with six jaw options available), it offers the flexibility to choose the right jaw set for cutting and crushing most any material found on the scrap and demolition jobsite.



### Pulverizers

Secondary pulverizers fine crush concrete and concrete blocks resulting from site demolition. Wide jaws with pick-up tips and numerous teeth, a large opening, reversible cutting edges and rapid closing time help reduce the largest possible amount of on-site concrete in the shortest possible time.



### Quick Couplers

CAT Quick Couplers increase the machine's flexibility and versatility by enabling rapid changeover of work tool attachments—keeping a single machine highly productive. Couplers are available for Loaders, Excavators and Backhoes.



### Rakes—Landscape

This rake style uses hardened teeth to pulverize, aerate, level and condition the soil—while collecting and depositing rock and debris into an integrated hopper bucket for quick removal. These rakes are designed to operate with the loader in reverse, leaving the soil finely groomed with minimal compaction.



### Rakes—Loader

CAT Loader Rakes feature fabricated steel teeth for strength and a long service life in land clearing, stump removal, and boulder and large tree moving. Heavy-duty styles with shorter teeth and more robust design are ideal for working in clay and other heavy soils. Rakes are available with or without a top clamp for Wheel and Track Loaders.



### Rakes—Power Box

This one work tool for Compact Track Loaders, Wheel Loaders and Skid Steer Loaders de-thatches, removes old lawns and weeds; grades, levels, rakes, removes debris; and prepares seedbeds. Angling ability enables the operator to windrow debris for easy pickup and removal.





### Rippers

With its powerful, single point of penetration, CAT Rippers are effective at breaking out rock and other difficult materials. Using it with a compatible quick coupler and rock bucket for “rip and load,” you can supplement or even eliminate blasting rock prior to truck loading.



### Rotors

Caterpillar offers a wide variety of sturdy rotors for reclaimers and milling machines. They are designed and built to precisely match the CAT machines they are mounted on to maximize efficiency, enhance productivity and ensure longer service life.



### Saws

Wheeled saws are designed for high performance trench cutting on a variety of hard or compact surfaces like asphalt, reinforced concrete and rocky or frozen ground. They are compatible with Compact Track Loaders, Skid Steer Loaders and Compact Wheel Loaders.



### Scarifiers

Scarifiers are designed for a wide variety of ground-preparation applications. These attachments are available for CAT Motor Graders.



### Shears

CAT Shears are designed for CAT machines—taking full advantage of the hydraulic flows and pressures to enhance productivity without compromising safety or causing premature wear of the shear and carrier. Mobile scrap and demolition shears can be boom-mounted, or stick mounted with or without a coupler.



### Silage Defacers

CAT Silage Defacers are designed to prepare silage and haylage for feed. With high-torque motors, the CAT Silage Defacers face through bunks reliably and ensure minimal oxygen penetration reducing waste.



### Snow Blowers

CAT Snow Blowers utilize a two-stage auger and impeller design to move a greater volume of snow quickly and efficiently. Compatible with Compact Track Loaders, Skid Steer Loaders, and Compact Wheel Loaders. CAT Snow Blowers are designed for removing snow from streets, parking lots, driveways and sidewalks.



### Snow Plows, Pushes and Wings

Whether on urban, rural or mountain roads, at airports, plant facilities, parking lots or clearing ditches, CAT Snow Plows, Snow Pushes and Snow Wings move snow with maximum efficiency and power. Snow Wings, one-way, reversible, angle and V-plow styles equip your CAT Loaders and Motor Graders for high-volume snow removal.



### Stump Grinders

Designed to economically remove stumps in residential, commercial and agricultural settings—CAT Stump Grinders offer increased production compared to tow-behind grinders in situations where multiple stump removals are required. They are compatible with Compact Track and Skid Steer Loaders, and Compact Wheel Loaders.



### Thumbs

Thumbs work in conjunction with excavator buckets, enabling the machine to pick, sort, stack, load and move various materials found on the jobsite. Pro Series Hydraulic Thumbs move and rotate with the bucket through the bucket rotation cycle. Rigid-link thumbs are a low-cost, effective solution in which the thumb is manually moved to one of two working positions.



### Tillers

Tillers are designed for breaking up and pulverizing soil, mixing compost or other material into existing soil, stabilizing and leveling existing terrain in landscape-finishing applications. CAT Tillers are compatible with Compact Track Loaders, Skid Steer Loaders and Compact Wheel Loaders.



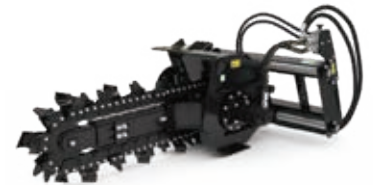
### Tilt Rotate Systems

CAT Tilt Rotate Systems fully integrate with the Next Gen 306 CR, 307.5, 308, 308.5, 309 or 310 Mini Excavators in as little as 3 to 4 hours. With 360 degrees of continuous rotation and tilt up to 40 degrees left or right, tilt and rotate to reach at any angle without the need to reposition your machine. Tiltrotators are productive, easy-to-use, and provide a versatile solution to your operation.



### Trenchers

CAT Trenchers are designed for use on Compact Track Loaders, Skid Steer Loaders and Compact Wheel Loaders—enabling these machines to cut narrow straight trenches in soil for laying electrical, telephone and cable lines, and water and gas pipe.



### Truss Booms

Truss booms for Telehandlers are designed to lift and place items like roof trusses, frames, beams as well as equipment. The truss boom, with its added horizontal and vertical reach, enables operators to place materials and equipment in hard to reach areas.



### Winches

CAT Retrieval Winches are built for easy installation on small dozers and are designed to handle various winch applications requiring high line pull and smooth speed modulation. They offer superior versatility and are ideal for dozers used in utility and retrieval type jobs.





# POWER SYSTEMS

## Electric Power Generator Set Packages - Diesel Emergency Stationary Use



### 60 Hz, 40 - 4000 kW Diesel Ratings

Three Phase Output* 1800 rpm			
kW*			
Model	Standby	Continuous	Configuration
C4.4 to C175-20	40 - 4000*/ 180 - 3600*	0 - 3250**	Please contact Milton CAT for available configurations.

\*All ratings at 0.8 pf.

\*\*Rating does not include package mounted radiator.

### 60 Hz, 40 - 1250 kW Diesel - GC North America

Three Phase Output* 1800 rpm			
kW			
Model	Standby	Engine	Configuration
D40GC to D1250GC	40 - 1250	C4.4 - C32	Please contact Milton CAT for available configurations.

\*All ratings at 0.8 pf.

## Non-Emergency Use

### 60 Hz, 500-3000kW Diesel Ratings

Three Phase Output* 1800 rpm		
kW		
Model	Standby	Prime
C18	500	455
3516C	2000	1825
3516C	2500	2250
C175-16	3000	2725

\*All ratings at 0.8 pf.

## Electric Power Generator Set Packages - Gas



### 60 Hz, 30 - 150 kW Ratings - Natural Gas

Coming Summer of 2022

### 60 Hz, 30 - 150 kW Ratings - Propane Gas

Coming Summer of 2022

## Emergency and Non-Emergency Use

### 60 Hz, 175 - 2500 kW Ratings - Natural Gas

Three Phase Output* 1800 rpm			
kW			
Model	Standby	Engine	Configuration
DG175-2 GC to G3520	175 - 2500	13.2 - G3520	Please contact Milton CAT for available configurations.

\*Not at all ratings. Please consult Milton CAT

### 60 Hz, 350 - 4050 kW Ratings - Natural Gas

1800 rpm	
Model	kW Continuous*
CG18 to G3520	350 - 2500
1500 rpm	
CG170-12 to G3520H	1125 - 2483
900 rpm	
CG260-12 to CG260-16	3000 - 4050

\*All ratings at 0.8 pf. Note: Electric output depends on final generator specification.

### 60 Hz, 177 - 3510 kW Ratings - Biogas

Three Phase Output* 1800 rpm	
Model	kW Continuous*
G3412 to G3520C	177 - 2000
1500 rpm	
CG170-12 to CG170-20	1200 - 2000
900 rpm	
CG260-16	3510

\*All ratings at 0.8 pf.

For additional information please consult the electric power experts at Milton CAT or refer to the CAT Electric Power Ratings Guide online.



## Energy Storage - Inverter Options



Model	Nameplate Energy	Energy Duration
<b>MPS-125</b>	125 kW	2/4+ Hours, Customizable
<b>MPSi-250</b>	250 kW	2/4+ Hours, Customizable
<b>BDP1000</b>	1000 kW	2/4+ Hours, Customizable
<b>CPS-1500</b>	1500 kW	2/4+ Hours, Customizable
<b>CPS-3000</b>	3000 kW	2/4+ Hours, Customizable

Please consult Milton CAT for more information.

## Mobile Generator Sets



### *Rental Generator Sets*

Model	Rating
<b>XQ35</b>	35 kVa
<b>XQ60</b>	60 kVa
<b>XQ125</b>	125 kVa
<b>XQ230</b>	228 kVa
<b>XQ425</b>	425 kVa
<b>XQ570</b>	625 kVa
<b>XQ800</b>	944 kVa
<b>XQ1000</b>	1250 kVa
<b>XQ1140</b>	1140 kVa
<b>XQ1475G</b>	1844 kVa
<b>XQ2000</b>	2500 kVa

# POWER SYSTEMS



## Electrical Systems (60 Hz)

### Automatic Transfer Switch (ATS)

<b>UL1008 Contactor Based</b>	UL-ANSI Type	Closed Transition
	600 V Class	Delayed Transition
	30 A - 3000A	Bypass Isolation
	Open Transition	



## Electrical Systems (60 Hz)

### Paralleling Switchgear

<b>Fully Customizable</b>	
<b>Modularization Capable</b>	
<b>Breaker Based - 220V to 15 kV</b>	
<b>Human Machine Interface (HMI) Controls</b>	
<b>Typical Applications:</b>	Emergency Standby Utility Paralleling Load Management

### Multi-Generator Paralleling Controls

<b>Engine Paralleling and Integration Control</b>	
<b>Integration Controls</b>	
<b>Generator Set Paralleling Controls (External Circuit Breaker)</b>	
<b>On-Package Genset Paralleling Controls</b>	
<b>Field Expandable</b>	
<b>Typical Applications:</b>	Emergency Standby Utility Paralleling Load Management

## Industrial Power Systems



### Industrial Engines - Diesel<sup>1</sup>

Model	hp	Model (cont.)	hp
<b>C0.5</b>	11 - 13.7	<b>3054C</b>	75 - 130
<b>C0.7</b>	11.8 - 17.8	<b>3406C</b>	361 - 465
<b>C1.1</b>	19.7 - 28	<b>3412</b>	624 - 724
<b>C1.5</b>	30 - 40	<b>3508</b>	630 - 1000
<b>C1.7</b>	24 - 48	<b>3508B</b>	1000 - 1100
<b>C2.2</b>	46 - 74	<b>3512</b>	1021 - 1501
<b>C2.8</b>	67 - 74	<b>3512B</b>	1501 - 1649
<b>C3.6</b>	74 - 134	<b>3512C</b>	1502
<b>C4.4</b>	101 - 201	<b>3516</b>	1356 - 2001
<b>C7.1</b>	150 - 320	<b>3516C</b>	2100
<b>C9.3B</b>	308 - 456	<b>3516E</b>	2100
<b>C13B</b>	456 - 577	<b>3606</b>	1998 - 2883
<b>C13</b>	385 - 536	<b>3608</b>	2800 - 3634
<b>C15</b>	475 - 595	<b>3612</b>	3983 - 5702
<b>C18</b>	575 - 800	<b>3616</b>	5431 - 7644
<b>C27</b>	800 - 1050		
<b>C32</b>	950 - 1200		

<sup>1</sup>Includes ratings for both highly regulated and lesser or non-regulated territories, unless noted otherwise.

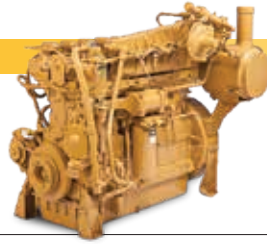
### Industrial Power Units - Diesel<sup>1</sup>

Model	hp
<b>C4.4</b>	101 - 188
<b>C7.1</b>	150 - 302
<b>C9.3B</b>	308 - 456
<b>C13</b>	385 - 520
<b>C13B</b>	456 - 577
<b>C15</b>	475 - 595
<b>C18</b>	575 - 630
<b>C27</b>	800 - 875
<b>C32</b>	950 - 1000



# OIL, GAS & MARINE PRODUCTS

## Oil & Gas Products

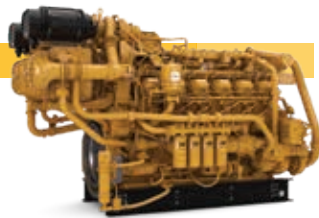


### Gas Compression Engines<sup>1</sup>

Model	bhp
G3520J	1480 - 1725
G3304BNA	95
G3306B	108 - 157
G3406	215 - 325
G3408 <sup>1</sup>	255 - 400
G3408C <sup>1</sup>	425
G3412 <sup>1</sup>	600
G3412C	637
CG137-8	400
CG137-12	600
G3508 LE <sup>1</sup>	524 - 670
G3508J LE	690
G3512TA LE	790 - 1004
G3512BJ LE	1035
G3516NA	660 - 1340
G3516J LE	1380 - 1400
G3520J LE	1200 - 1400
G3606A4	1875 - 2010
G3608A4	2500 - 2675
G3612 A4	3750 - 4000
G3616A4	5000 - 5350
G12CM34 Gas	6135
G16CM34 Gas	8180
G3516TA	1380

<sup>1</sup>Includes ratings for both highly regulated and lesser or non-regulated territories, unless noted otherwise.

## Oil & Gas Products



### Land Electric - Drive Engines

Model	bhp
3512E Tier 4	1477 - 1750

### Land Electric - Drive Modules

Model	ekW
3512	990
3512B	995 - 1200
3512C	995 - 1245
C18 Tier 4F	455

### Land Mechanical Engines

Model	bhp
C15 ACERT Tier 3	440 - 540
C15 ACERT Tier 4i	475 - 580
C18 ACERT Tier 3	575 - 700
C18 ACERT Tier 4 Final	575 - 800
C18 ACERT Tier 4i	600 - 755
C27 ACERT Tier 2	800 - 1150
C27 ACERT Tier 4 Final	800 - 1050
C32 ACERT Tier 2	800 - 1500
C32 ACERT Tier 4 Final	1000 - 1200
3508A	680 - 855
3508C	820 - 1000
3512A	1020 - 1280
3512C	1150 - 1500
3516	1649

### Land Generator Sets - Diesel

Model	kVA
C15 Acert Tier 2	400 - 570
C15 Acert Tier 4i	456
C18 Acert Tier 2	625 - 850
C27 Acert Tier 4i	1035
C27 Acert Tier 2	907 - 1035
C32 Acert Tier 2	1138 - 1300

### Land Generator Sets - Multiple Fuels

Model	ekW
3516B with Dynamic Gas Blending	2000
CG137-12	400
G3306B	131

# OIL, GAS & MARINE PRODUCTS

## Offshore Generator Sets

Model	kVA	
	50Hz	60Hz
<b>3500 Family</b>	799	2013
<b>C175C Family</b>	2619	3325
<b>C280 Family</b>	2063	6875
<b>CM20C Family</b>	1296	2160
<b>8CM20C Family</b>	1728	1920
<b>9CM20C Family</b>	1944	2160
<b>6CM25E Family</b>	2520	2520
<b>8CM25E Family</b>	3360	3360
<b>9CM25E Family</b>	3760	3760
<b>C280-6</b>	2063	2425
<b>C280-8</b>	2250	3250
<b>C280-12</b>	4125	4875
<b>C280-16 FMT</b>	5500	6500
<b>6CM32C</b>	3600	3600
<b>8CM32C</b>	4800	4800
<b>9CM32C</b>	5400	5400
<b>12CM43C</b>	15278	15278
<b>16CM43C</b>	20370	20370
<b>6CM34DF</b>	3856	3856
<b>8CM34DF</b>	5141	5141
<b>6CM46DF</b>	7020	7020
<b>7CM26DF</b>	8190	8190
<b>8CM46DF</b>	9360	9360
<b>12CM46DF</b>	14040	14040
<b>16CM46DF</b>	18720	18720

## HazPak

Model	bhp	bkW
<b>C7</b>	205 - 230	153 - 172
<b>C9</b>	340	227 - 254
<b>C15</b>	536 - 540	400 - 403

## Well Service Engines

Model	Power	Weight	Gear Ratio
	bhp	lb-ft	
<b>WS255</b>	2500	16,600	6.353:1
<b>WS305 XD</b>	3000	24,736	5.55:1

## Well Service Pumps

Model	bhp
<b>C7 ACERT</b> Water-cooled Manifold	275
<b>C7 ACERT</b> Dry Manifold	225 - 300
<b>C7 ACERT</b> Hazardous Location	205 - 230
<b>C9 ACERT</b> Water-cooled Manifold	325 - 340
<b>C9 ACERT</b> Dry Manifold	275 - 375
<b>C9 ACERT</b> Hazardous Location	340
<b>C11 ACERT</b> Dry Manifold	325 - 450
<b>C13 ACERT</b> Dry Manifold	385 - 520
<b>C15 ACERT</b> Water-cooled Manifold	536 - 540
<b>C15 ACERT</b> Dry Manifold	440 - 595
<b>C15 ACERT</b> Hazardous Location	536 - 540
<b>C15 ACERT</b> Tier 4i	475 - 580
<b>C18 ACERT</b> Dry Manifold	575 - 800
<b>C18 ACERT</b> Tier 4i	600 - 700
<b>C18 ACERT</b> Tier 4 Final	600 - 800
<b>C27 ACERT</b> Tier 4 Final	800 - 950
<b>C27 ACERT</b> Dry Manifold	800 - 1150
<b>C32 ACERT</b> Hazardous Location	800 - 1110
<b>C32 ACERT</b> Tier 4 Final	1125
<b>C32 ACERT</b> Water-cooled Manifold	800 - 1225
<b>C32 ACERT</b> Dry Manifold	800 - 1350
<b>3512B</b> Well Stimulation	2000 - 2250
<b>3512C DGB</b>	2250 - 2500
<b>3512C</b>	2150 - 2500
<b>3512C HD</b> Offshore	2150 - 2500
<b>3512E DGB</b> Tier 4 Final	2250 - 2500
<b>3516C HD</b>	3000 - 3300
<b>3512E</b> Tier 4 Final	2250 - 2500

## Transmissions

Model	Power	Torque	Weight
	bhp	lb-ft	lb
<b>CX31-P600</b>	600	2025	1006
<b>TH48-E70</b>	1200	4422	3735
<b>CX48-P2300</b>	2300	6656	3530
<b>TH55-E70</b>	3300	9350	6330
<b>TH55-E90</b>	3300	9350	6075

# OIL, GAS & MARINE PRODUCTS

## Marine Engines<sup>1</sup>



Model	Propulsion Ratings	Generator Set Rating
	bhp	ekW
<b>C1.5</b>	-	12
<b>C2.2</b>	-	18 - 25
<b>C4.4</b>	-	65 - 105
<b>C7.1</b>	280 - 500	100 - 163
<b>C9.3</b>	375 - 476	250 - 274
<b>C12.9</b>	838 - 985	-
<b>C18</b>	469 - 1136	430 - 530
<b>C32</b>	750 - 1900	880 - 940
<b>C32B</b>	2000 - 2400	-
<b>3512E</b>	1341 - 2549	-
<b>3516E</b>	2501 - 3500	-
<b>C280-8</b>	3299 - 3634	2200 - 2420
<b>C280-12</b>	4962 - 5444	3300 - 3640
<b>C280-16</b>	6169 - 7577	4400 - 4840

<sup>1</sup>EPA Certified Only

## Fire Pumps<sup>1</sup>



### *Diesel*

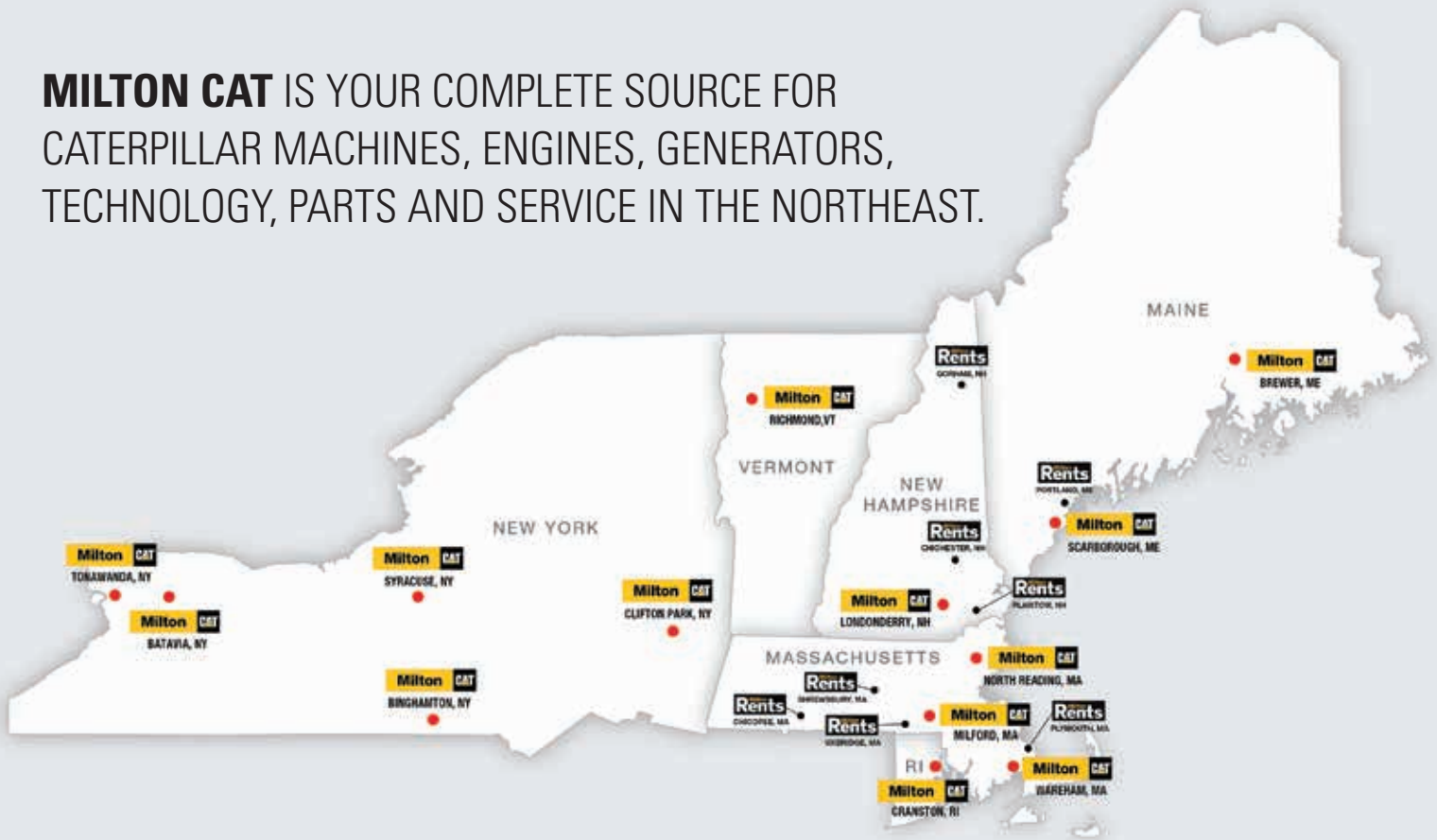
Model	hp
<b>C18 Acert</b>	599 - 800
<b>3406C<sup>1</sup></b>	292 - 481
<b>3412C<sup>1</sup></b>	638 - 739
<b>3508<sup>1</sup></b>	951 - 1065
<b>3512<sup>1</sup></b>	1430 - 1600
<b>3516<sup>1</sup></b>	1900 - 1985

<sup>1</sup>For use in lesser regulated territories.





**MILTON CAT** IS YOUR COMPLETE SOURCE FOR CATERPILLAR MACHINES, ENGINES, GENERATORS, TECHNOLOGY, PARTS AND SERVICE IN THE NORTHEAST.



## MILTON CAT LOCATIONS

### BATAVIA

4610 E Saile Drive  
Batavia, NY 14020  
**(585) 815-6200**

### BINGHAMTON

55 Industrial Park Drive  
Binghamton, NY 13904-3201  
**(607) 251-6500**

### BREWER

79 Robertson Boulevard  
Brewer, ME 04412-2246  
**(207) 991-3100**

### CLIFTON PARK

500 Commerce Drive  
Clifton Park, NY 12065-1314  
**(518) 877-6800**

### CRANSTON

2158 Plainfield Pike  
Cranston, RI 02920  
**(401) 946-6350**

### LONDONDERRY

30 Industrial Drive  
Londonderry, NH 03053  
**(603) 665-4500**

### MILFORD

100-101 Quarry Drive  
300 East Main St.  
Milford, MA 01757  
**(508) 634-3400**

### NORTH READING

84 Concord Street  
North Reading, MA 01864  
**(978) 276-2400**

### RICHMOND

150 CAT Lane  
Richmond, VT 05477  
**(802) 434-7800**

### SCARBOROUGH

16 Pleasant Hill Road  
Scarborough, ME 04074  
**(207) 885-8000**

### SYRACUSE

94/336 Ainsley Drive  
Syracuse, NY 13210  
**(315) 476-9981**

### TONAWANDA

400 Wheeler Street  
Tonawanda, NY 14150  
**(716) 799-1320**

### WAREHAM

14 Kendrick Road  
Wareham, MA 02571  
**(508) 291-1200**

## MILTON RENTS LOCATIONS

### CHICOPEE

60 Fuller Rd.  
Chicopee, MA 01020  
**(413) 289-8070**

### CHICHESTER

100 Dover Rd  
Chichester, NH 03258  
**(603) 736-8508**

### GORHAM

509 Main Street  
Gorham, NH 03581  
**(603) 752-5588**

### PLAISTOW

22 Old Rd  
Plaistow, NH 03865  
**(603) 974-7134**

### PLYMOUTH

111 Camelot Drive  
Plymouth, MA 02360  
**(508) 746-7368**

### PORTLAND

750 Warren Ave.  
Portland, ME 04103  
**(207) 228-1200**

### SHREWSBURY

14 Fortune Blvd.  
Shrewsbury, MA 01545  
**(774) 275-2450**

### UXBRIDGE

755 Quaker Highway  
Uxbridge, MA 01569  
**(774) 481-3150**

**Milton** **CAT**

[miltoncat.com](http://miltoncat.com)